



PARENT
INFORMATIONAL
MEETING
August 23, 2023





Agenda

- Vision –Theme- Culture of the school
- Team Introductions
- Message from Principal Jones and Academic Update
- School history, traditions and annual events
- Our school data
- CurbSmart – New dismissal app.
- Mr. Nordstrom – Operational Update
- Mrs. Chmura – Literacy update
- Message from Ms. Novack
- Mrs. Krause – ESE Update
- PTA Update



VISION: LEARNING TODAY, LEADING TOMORROW

THEME: 2023-2024

Be a Champion!

Unleash Your Potential

School Culture

- Warm and inviting environment where we treat each other as FAMILY.
- Creating an Inclusive, positive and student focused environment – Celebrating the small and the big wins
- Griffin is someplace special – a hidden gem – beautiful neighborhood school.
- Superintendent Licata's message : School should be Student focused , Teacher supported, and Principal led.
- Enrollment – 596
- Programs
- Gen. Ed Classes



Who's Who

- Principal: Mrs. Jones
- Assistant Principal: Mr. Nordstrom
- Literacy Coach: Mrs. Chmura
- School Counselor: Ms. Novack
- ESE Specialist – Mrs. Krause
- Media Specialist – Mrs. Berger
- Micro-Tech – Mrs. Sanchez
- Head Custodian – Mr. King
- Office Manager – Mrs. Lauridsen
- IMT – Mrs. Dunakin
- Book –keeper – Ms. Bryson
- ESE Clerk – Mrs. Miller
- Receptionist- Ms. Correa

TEAM LEADERS

Congratulations!

- KG – Mrs. Del Corral
- 1st – Mrs. Cohenour
- 2nd – Mrs. Alderman
- 3rd – Mrs. Keller
- 4th – Mrs. Baquedano
- 5th – Mrs. Shapiro

Specials: Mr. Vonachen

ESE REP: Mrs. Corriveau

ESP REP: Mrs. Lacasse

BTU Rep: Ms. Goffney

BTU Rep: Mr. Chandler



Principal Jones

- My Story – My background – personal and educational
- My Leadership Style
- Curriculum
- Assessments
- Academic nights
- Clubs – Safety and Eco- Patrols, TOTS- classroom helpers, media helpers, Student council, debate, STEM, robotics, ART – parent led, WGES – news crew, band, chorus, and Math club – selected students for competition.
- Specials – MEDIA, PE, MUSIC

History and Traditions

Established 1979

Building 1 and then added
building 2 and portables – 900
students – now we range
around 600

Fun Run

December Dash

Turkey Trot

Field Days

5th grade dance

Grand Parents day with bookfair

Bingo Nights

Ice Cream Social with DJ

Red Ribbon Week

Jump rope of Heart

Adopting a sister school

Thanksgiving Baskets

Toy Drive

Gently used Halloween Costumes

Fall Parade – with Pioneer Band

Holiday Shop

Day of Service and love

Egg Hunt

Cookies for Courage

DATA DRIVES OUR SCHOOL GRADE





3-YEAR DATA TREND

	20/21 FSA	21/22 FSA	22/23 FAST
ELA	68	71	73
MATH	63	76	78
SCIENCE	64	63	59

Focus for 2023-2024

SCIENCE

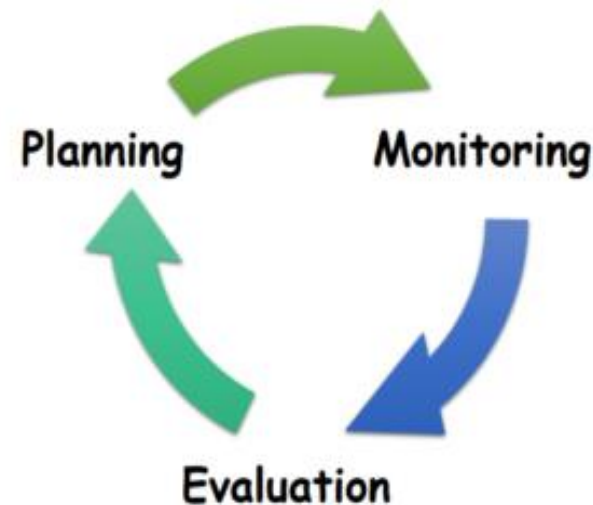
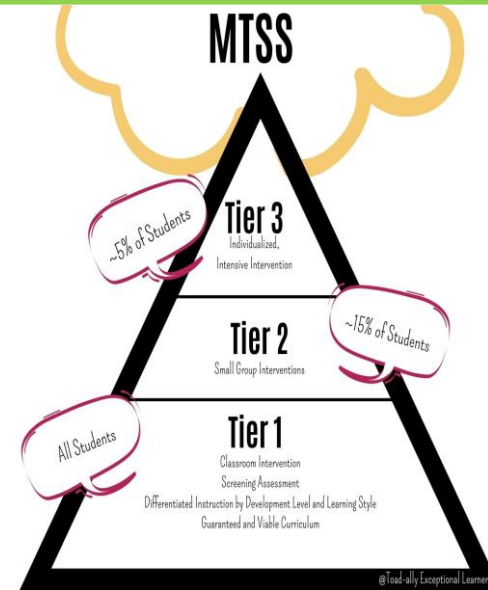
WRITING

IREADY – Reading and Math



Griffin's Framework for Success- EVERY 1 COUNTS

T	TIER 1 INSTRUCTION	Core instruction 100% of the students – consists of learning experience in which ALL students participate. Emphasis on grade level standards-instruction should be explicit, differentiated, flexible grouping and active student engagement
I	INTERVENTIONS Tier 2 and Tier 3	Tier 2 – 10-15% of the students needing supplemental instruction to be successful. Tier 3 – not more than 8% of students needing intensive remediation- one to one or small group setting- on a few skills for mastery
P	PROGRESS MONITORING	To evaluate effectiveness of instruction. Tells you what the students has learned and what still needs to be taught.
S	SETTING HIGH ACADEMIC STANDARDS	Believing in students potential and communicate that to them. Building relationships – meeting students where they are- leads to improved performance. Engaging students interactively – whoever doing the most talking is doing the learning



CurbSmart

Starting in September





Mr. Nordstrom Assistant Principal

Educational Journey

Arrival and Dismissal

Change of dismissal

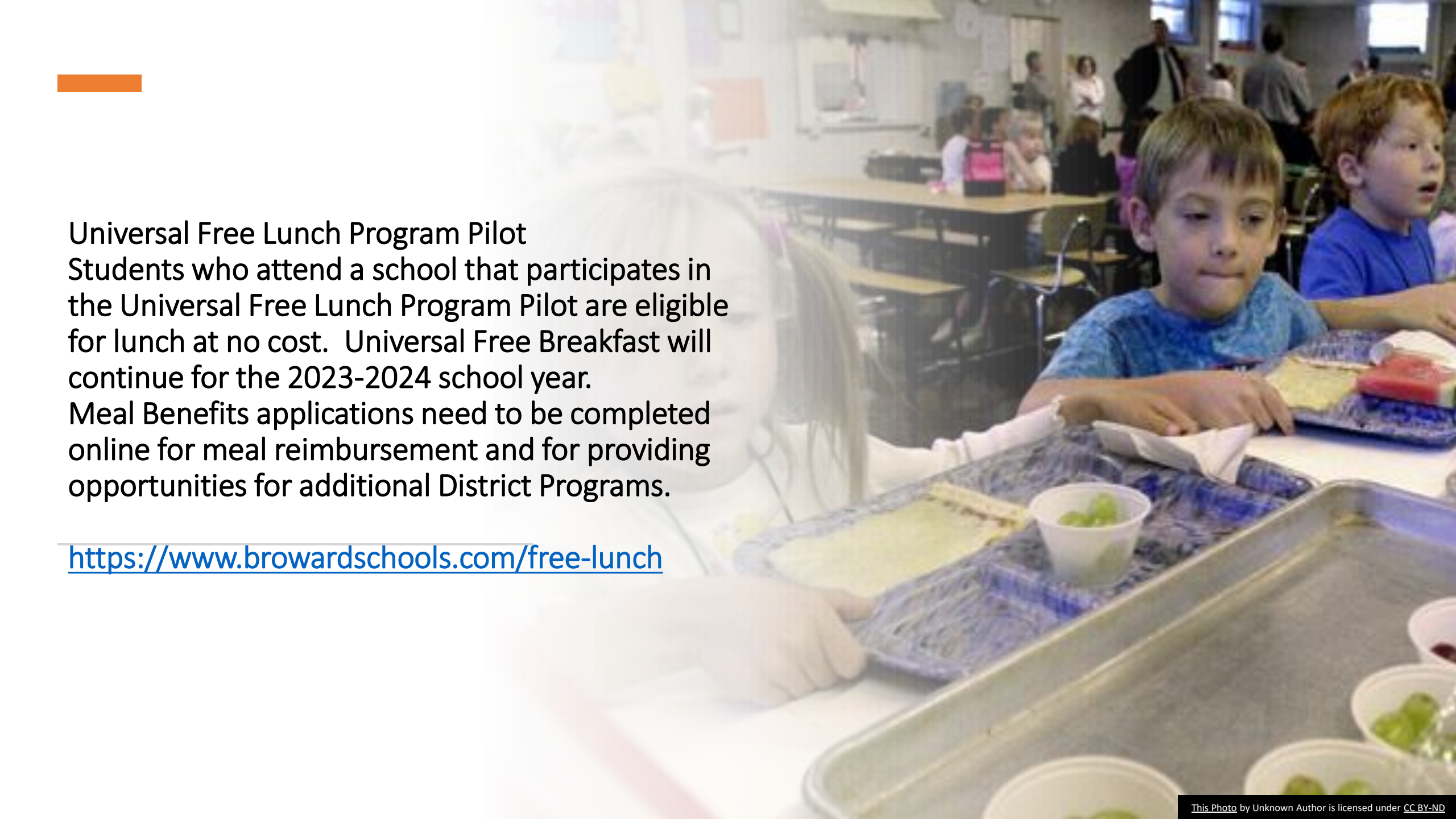
Neighborhood Concern

Gate Schedule

Uniforms

Positive Behavior Plan

Aftercare

The background image shows a school cafeteria with several students sitting at long tables, eating lunch. In the foreground, a boy in a blue shirt is looking down at his food, which includes a sandwich and a cup of green grapes. To his right, another boy in a blue shirt is looking towards the camera. In the background, other students and adults are visible, some standing and some sitting. The overall atmosphere is a typical school lunchtime.

Universal Free Lunch Program Pilot
Students who attend a school that participates in the Universal Free Lunch Program Pilot are eligible for lunch at no cost. Universal Free Breakfast will continue for the 2023-2024 school year. Meal Benefits applications need to be completed online for meal reimbursement and for providing opportunities for additional District Programs.

<https://www.browardschools.com/free-lunch>



Literacy Coach – Debbie Chmura

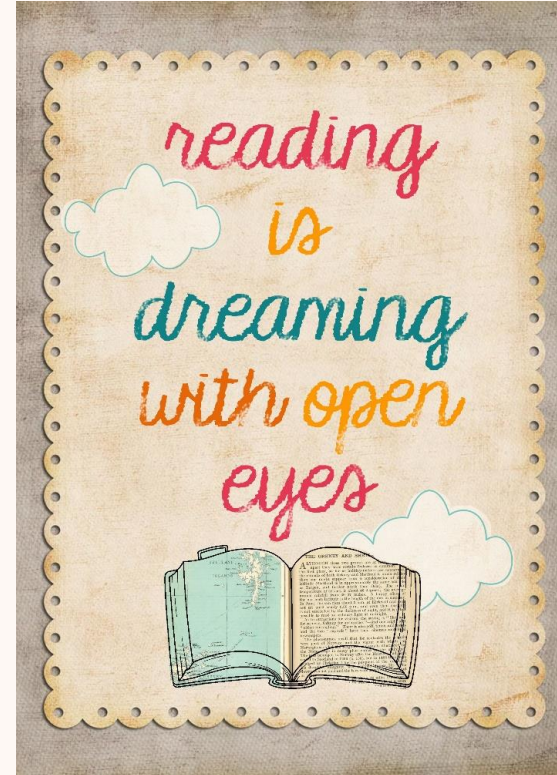


- Provide teachers with information and resources to support student learning.
- Assist teachers to identify needs of students, access resources, and build relationships that will help address those needs.
- Share research and instructional resources with teachers to assist meeting student needs.
- Analyze student achievement data.



How I help our school...

- Provide resources
- Identify intervention programs
- Coordinate curriculum crossover
- Analyze data
- Support Students
- Support Teachers
- Support Administration



Contact Information

Email:

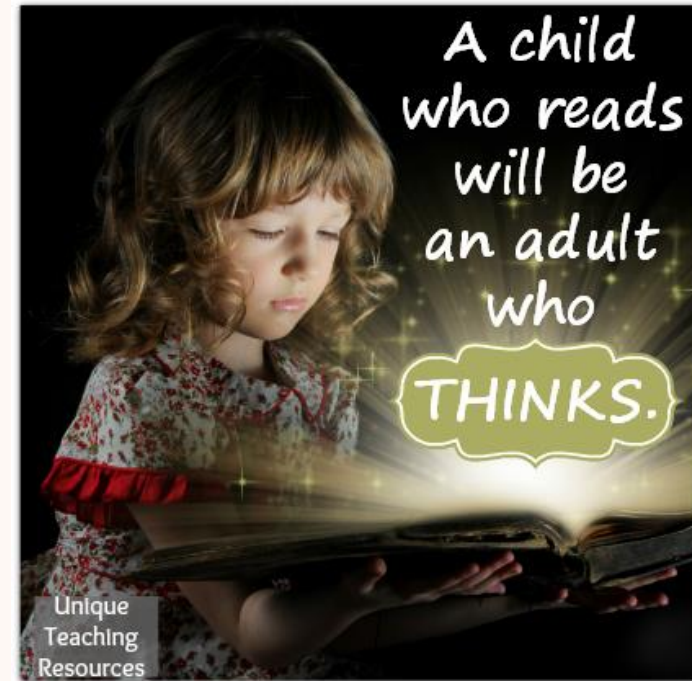
Deborah.Chmura@browardschools.com

Phone:

754-323-5917

“Today a reader, tomorrow a leader.”

Margaret Fuller



School Counselor



Teena Novack

Welcome,
Thank you for allowing me the honor of working with your children and joining them on their journey to becoming well rounded, productive, and happy individuals.





Individual Support



Small Group Support



Character Education



School-Wide Lessons
and Celebrations



Academic and
Behavior Interventions



Culturally Responsive
Teaching Support





Feel free to reach me:

Email:

teena.novack@browardschools.com

Phone: 754 323-5900

Parent/Guardian and Counselor Collaboration = Student Success



ESE Specialist: Sabrina Krause

- Provide support to all school-based personnel regarding the education of students with exceptionalities
- Collaborate with teachers, providers, parents, and district program specialists in order to meet the unique needs of our ESE students
- Facilitate ESE meetings



Special Education Services at Griffin



Consultation



Collaboration



Support Facilitation in the General Education Classroom (push-in)



Support **Facilitation** in the ESE Classroom (pull-out)



Emotional or Behavioral Disability (EBD) Special Program



Pre-K Programs



Gifted



Contact Information

ESE Specialist

Sabrina.Krause@browardschools.com

ESE Secretary

Tina.Miller@browardschools.com

Phone: (754) 323-5922

Support Facilitator for K
– 2nd Grade

• Deborah Corriveau

Support Facilitator for
3rd – 5th Grade

• Sasha Lyn

SLP for Pre-K – 1st
Grade

• Stephanie Sanabria

SLP for 2nd – 5th Grade

• Vicky Pao

Behavioral Technicians

• Alicia Hajaree
• Chandler Thompkins

School Psychologist

• Rosemary Eljaua

Social Worker

• Yolanda Pinto

ESE Counselor

• Judith Milian

Occupational Therapist

• Vikki Goettert

Physical Therapist

• Heather Sossoman



Parent Involvement

IEP Team

EP Team

Collaborative Problem-Solving Team

Parent/Teacher Conference

Volunteers

PTA-Parent Teacher Association

SAC-School Advisory Council

ESE Advisory Council



Griffin PTA 2023-2024

OUR VISION

The PTA is here for all our students, parents, and teachers to help make the learning environment enjoyable for all. Together we will continue to be a powerful voice for our children and a relevant resource for parents.

Join the PTA for \$8.00 at: <https://griffinelementary.memberhub.store/>

TEAM

Together

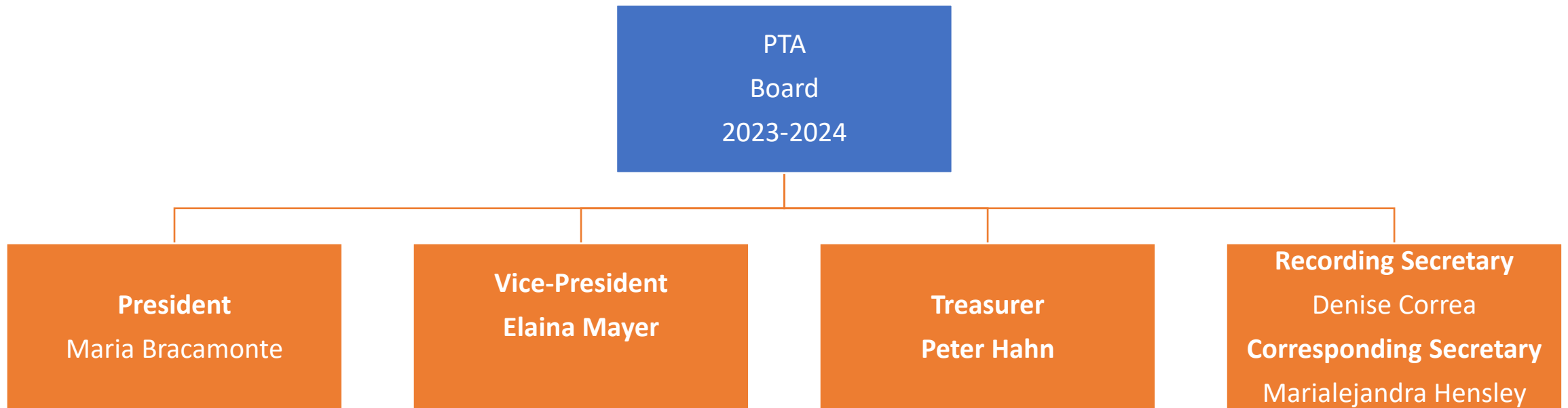
Everyone

Achieves

More



Thank you – New PTA Board!



Visit the PTA website: www.Griffinpta.org

What does the PTA do?

- We have already funded materials and programs for the 2023-2024 school year such as Scholastic News, Story Works, Science Spin, and agendas for students.
- We help support the families in our community by supplying uniforms, conducting a school supply drive, and a holiday toy drive.
- We host Icee Friday's, the FUN Run, Book Fairs, and Family Nights.
- We can be reached through email or the PTA Facebook page.
- Join the PTA remind group: Griffin PTA volunteers; code: @6af6h3f



**THIS FRIDAY IS ...
Icee Friday!!**



\$1 EACH



Why Join the PTA?

- We can't do this without you!!!
- Prizes for most memberships in a classroom
- Volunteer! We have many committees that need your help Join us: volunteer@griffinpta.org
- Join our Facebook Page at: <https://www.facebook.com/groups/GriffinElementarySchoolPTA/>



Need Assistance!



Email: first name.last
name@browardschools.com



School Website



Phone: 754-323-5900



In Person - Office Hours 7:30
AM– 3:00 PM



Follow us on Facebook –
Griffin Elementary School PTA



Twitter – Griffin Elementary -
@Griffin.Elem



CONTACT US



THANK
YOU